

Tony Bostock *MBE, MIFM, CEnv.*

Chief Executive - Severn Rivers Trust

admin@severnriverstrust.com

www.severnriverstrust.com

Tel: 01886 888394

Mob: 07817 622919

River Severn (Afon Hafren)





Severn Rivers Trust

Founded 2008



Incorporating
Teme Rivers Trust



Charitable Status February 2010

Delivered projects over £4m
in the last two years

8 full time employees
3 Part time employee



Full Members of:

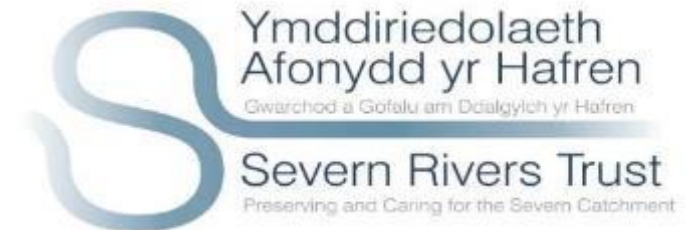
Afonydd Cymru (Rivers Trust Wales)

The Rivers Trust (Formerly the
Association of Rivers Trusts)

Magnificent Severn

(Managing the total Severn Catchment)

- **Severn Rivers Trust** – The only organisation with an holistic approach to the management of the Severn catchment
- 10 Wildlife Trusts
- 6 Water Companies
- All Statutory bodies – i.e. NRW, NE, EA & FC etc.
- Local, regional & national Government.
- Ecosystems Services Approach.



Benefits of our work

- Reduced erosion and soil Loss
- Habitat improvement
- Increase in biodiversity
- Promoting best practice in agriculture and land management
- Reducing flood risk
- Water quality Improvements
- Improving fish passage





Run-Off & Sedimentation



We Treat Soil Like Dirt !

- 30% of the UK 's topsoil lost in the last 40 years.
- Rate of loss increased by 300% in last 30 years.
- 2.2m tonnes of topsoil deposited in our rivers every year.
- Loss to replenishment ratio 14 to 1 in Europe.
- 44% of arable land is at risk of water erosion
- 2006 Guidance to DEFRA - value of loss of soil by erosion £264m/year across the UK
- The UK's top soil could be lost within 6 decades!







Ymddiriedolaeth
Afonydd yr Hafren
Severn Rivers Trust
Preserving and Caring for the Severn Catchment







River Teme Project

“Springs of Rivers”

£4.2m project over 4 years

(£3.1m from the Heritage Lottery Fund)

Fish passes

Education programme

Teme Way

Habitat Restoration

Fisheries improvements

Invasive species

Trainee/Apprentice scheme

Public & Community Engagement



River Teme – Dinham Fish Pass



Funded by the DEFRA River Improvement Fund & European Fisheries Fund

£19.4m - LIFE & HLF Project

“Unlocking the Severn for People and Wildlife”



Objective

Restore *A. fallax* to its historic spawning range on the River Severn and the River Teme Site of Special Scientific Interest by removing nine major barriers to migration. This will open up an additional 230km of spawning grounds to the current distribution.



**LIFE-Shad Map 2: Location Severn Estuary/Mor Hafren SAC (UK0013030),
River Severn and River Teme**



Deep vertical slot Pass



Diglis Weir

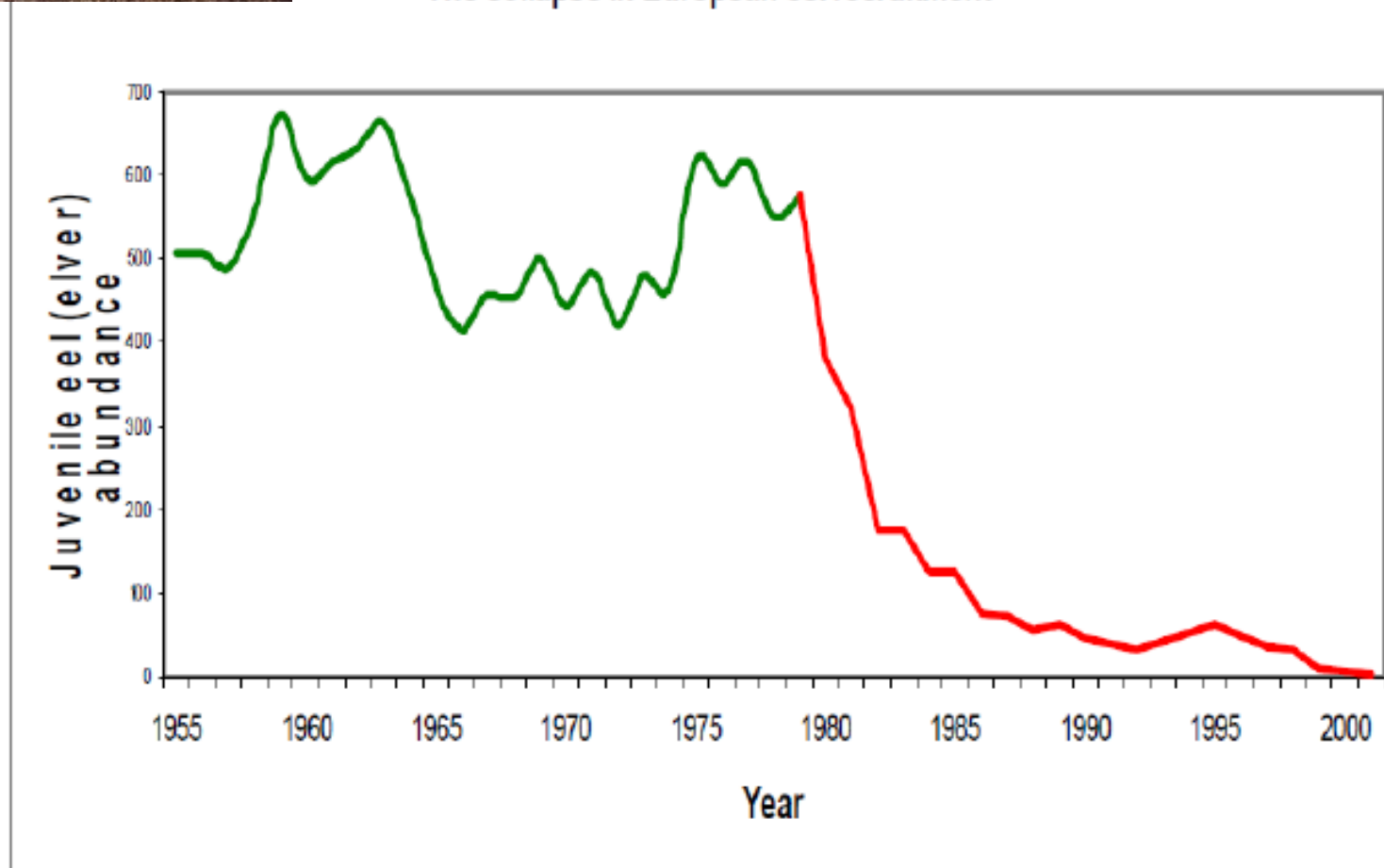


Linking our natural, cultural & industrial heritage



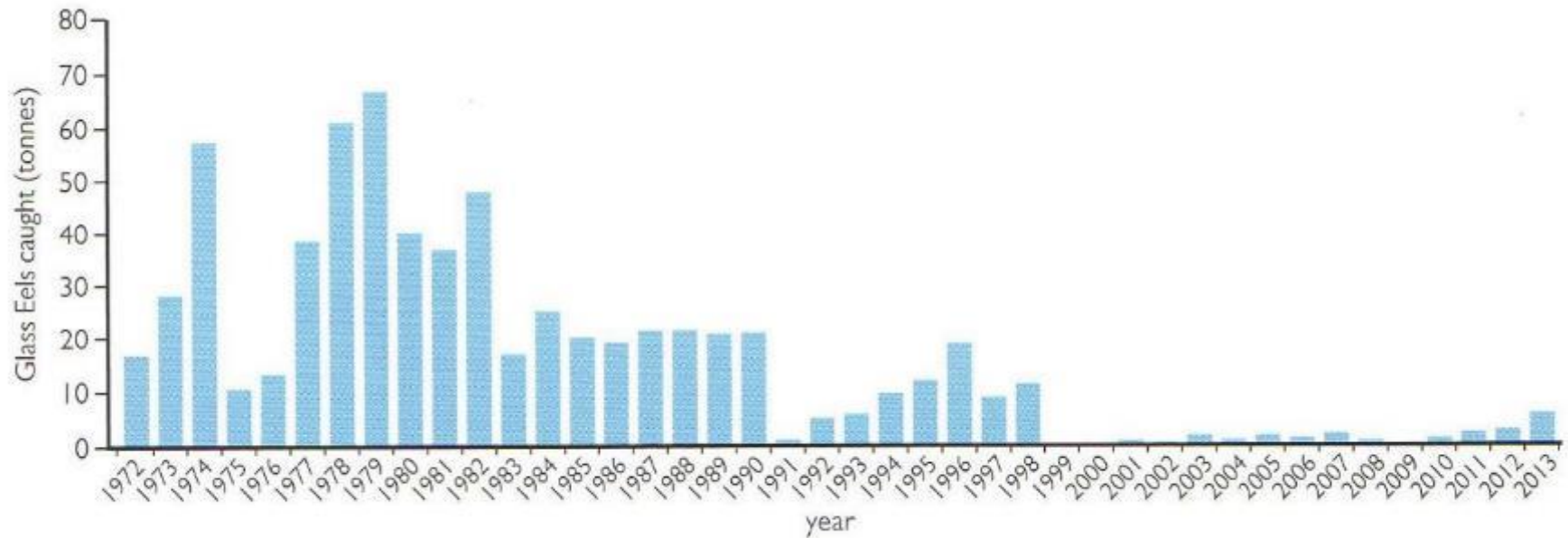


The collapse in European eel recruitment



Source:

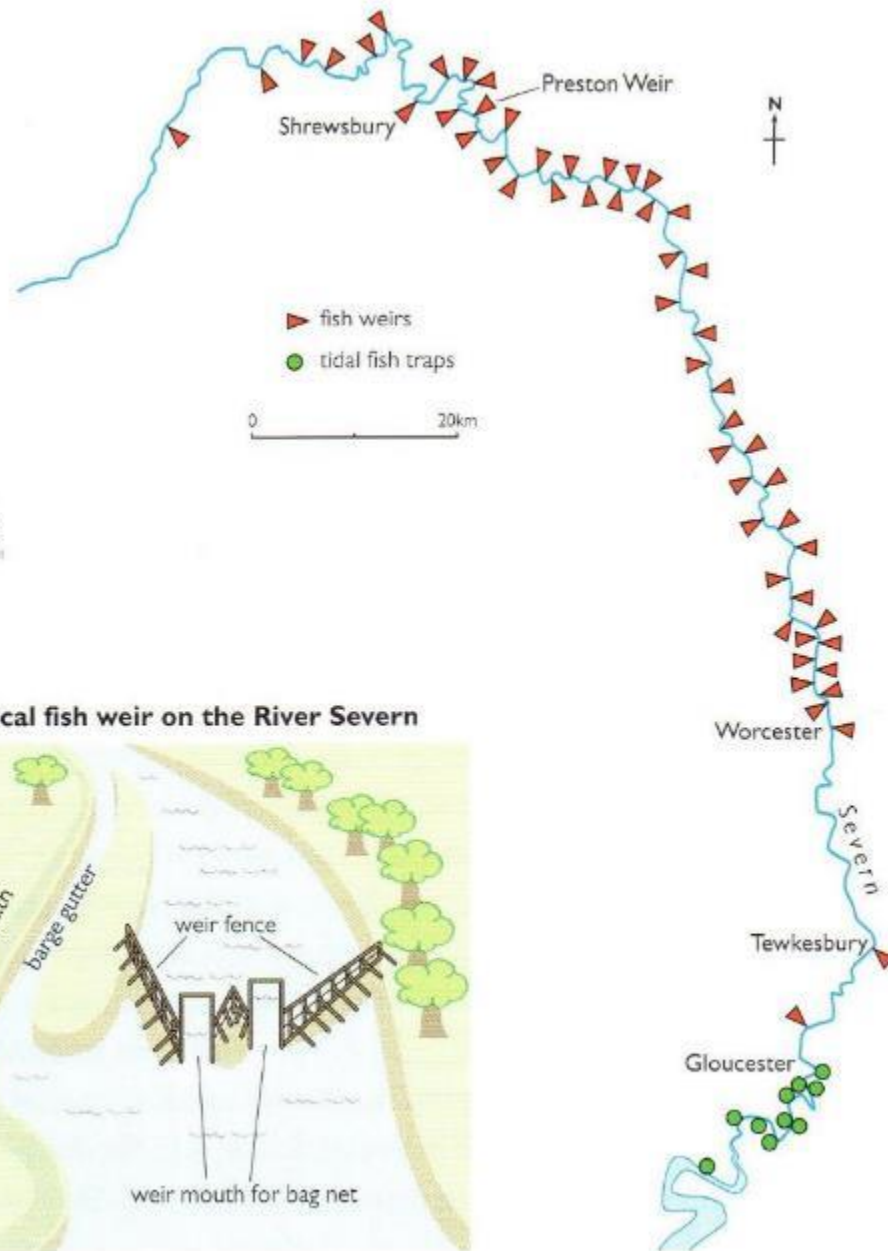
Severn Estuary Elver Catches 1972 - 2013



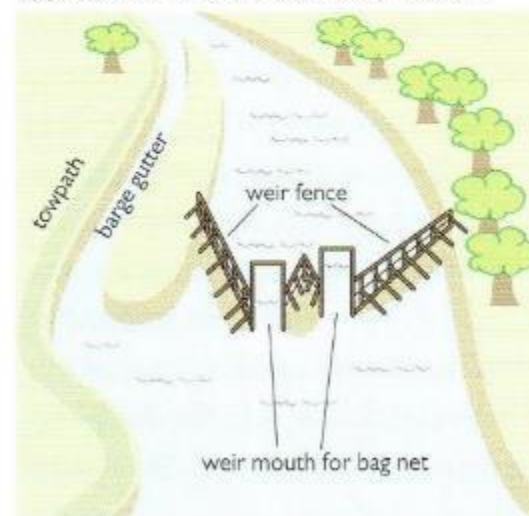




Medieval fish weirs along the River Severn.

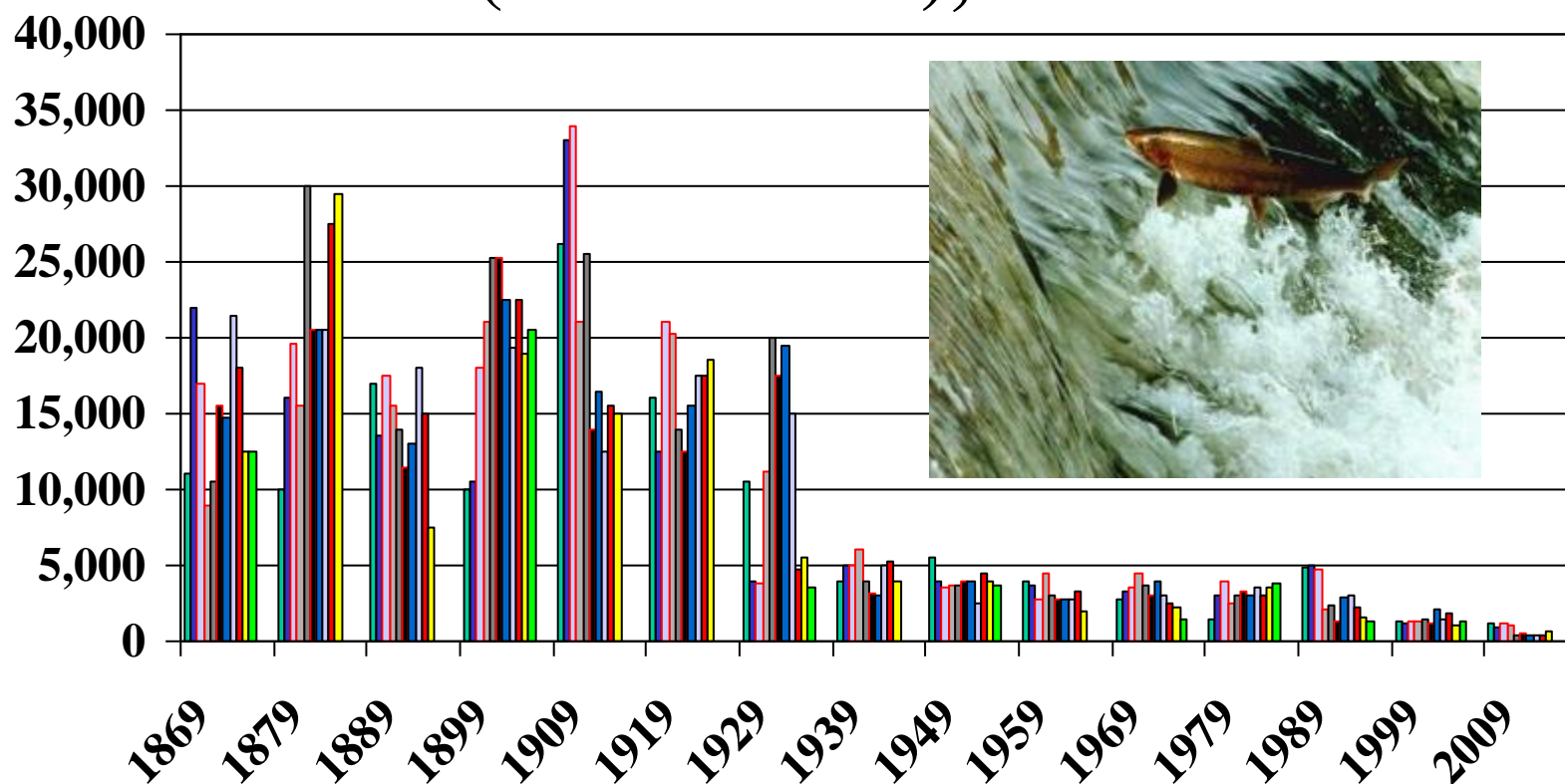


Typical fish weir on the River Severn



Source: **Rivers**
(Nigel Holmes & Paul Raven 2014)

River Severn & Teme Total Salmon Catches (all methods), 1869 - 2015

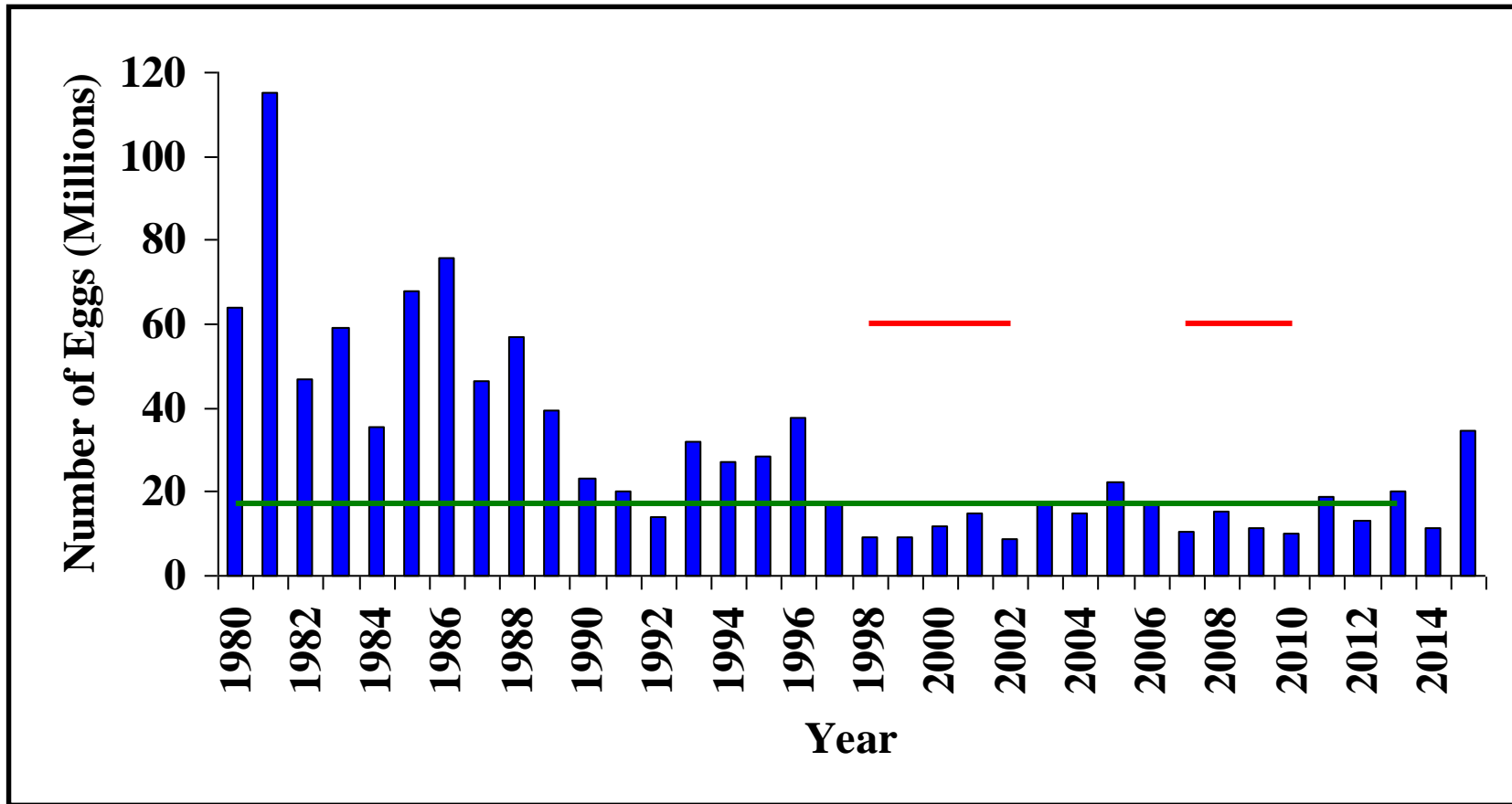


Source:



Cefas

Severn Catchment Egg Deposition & Conservation Limit (1980 – 2015)



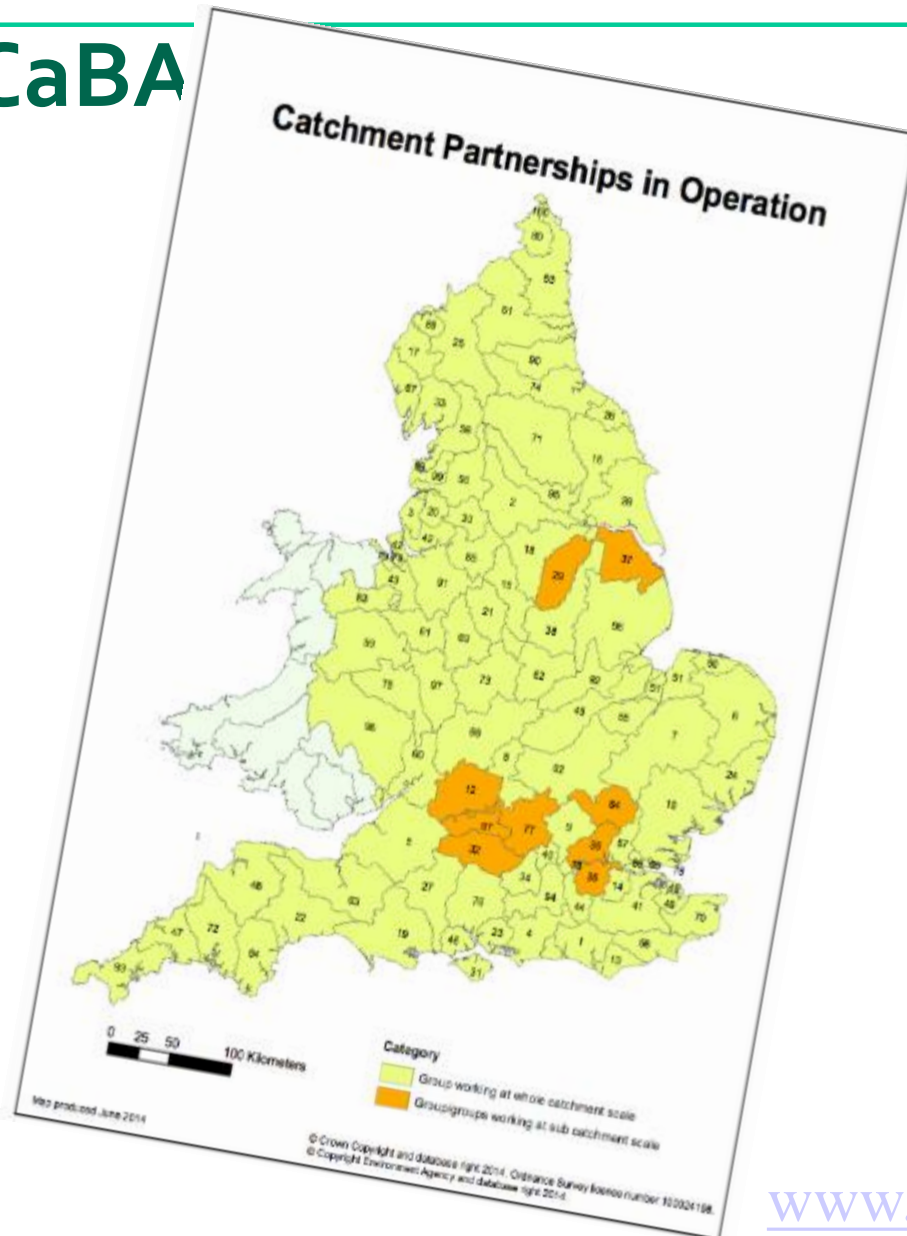
Catchment Based Approach

(CaBA)



~100 De-centralised partnerships

~70% rivers trust host or co-host role



www.catchmentbasedapproach.org

CaBA Partnerships



The Severn Vale Catchment Partnership

- *Steering Group*
- *Catchment Workshops*
- *Ecosystems Services Approach (Mapping & Consultation)*
- *Project Register*
- *Catchment Partnership Action Funf (CPAF)*
- *Riverfly Workshops*
- *Severn Vale Events*



SRT Volunteers & Community Groups



Ymddiriedolaeth
Afonydd yr Hafren
Gwasanaeth a Chymorth i'r Cymuned yr Hafren
Severn Rivers Trust
Preserving and Caring for the Severn Catchment





Ymddiriedolaeth
Afonydd yr Hafren
Gwarchod a Gofalu am Ddaetholwyr yr Hafren
Severn Rivers Trust
Preserving and Caring for the Severn Catchment

Riverfly Workshops




**The Riverfly
Partnership**



Citizen Science – Riverfly Monitoring

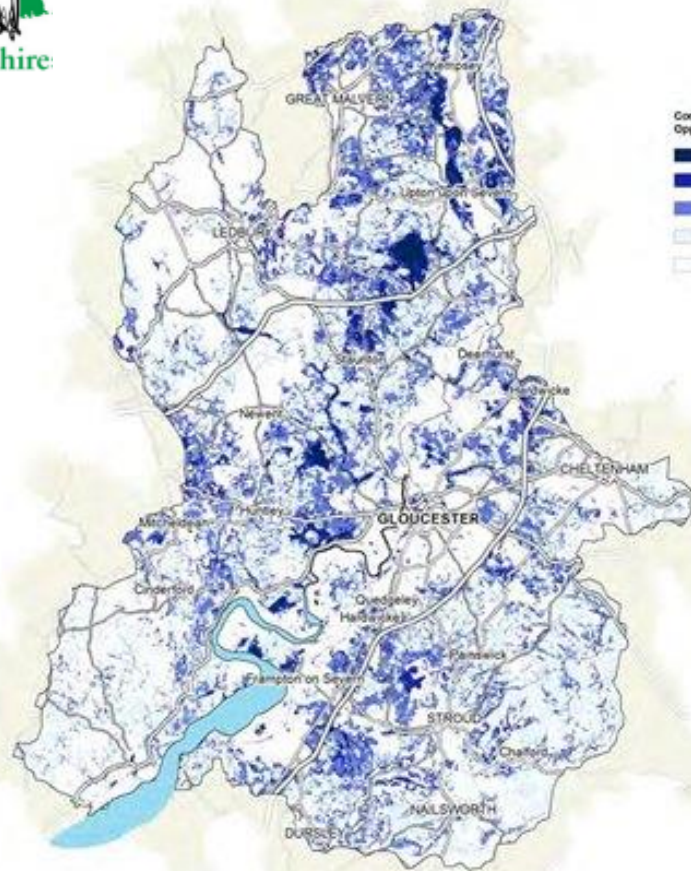


- **Trained 335 riverfly monitors since 2009**
- **Sampling 116 locations on 57 different rivers and streams.**
- **Largest Riverfly Monitoring Group in the UK**
- **Diatom & water quality sampling planned.**





Severn Vale ESS Mapping



For illustrative purposes only


ECONOMY


£14bn
critical infrastructure
in the Severn Estuary


3,293,000
people living in districts
and counties bordering
Bristol Channel

49.2m
visitors to
the region

17,450
jobs dependent
on Bristol and
South Wales ports

 Ports

 Tourism

 Conventional
Power
Generation

Chepstow

Sharpness

Gloucester

Newport

Cardiff

Barry

Weston-super-Mare

Bristol

Burnham-on-Sea

Bridgewater

Swansea

Port Talbot

ENVIRONMENT


20,300
hectares of mudflats
cover the intertidal
area


Inner Bristol Channel
important for feeding
seabirds

111
species of fish

1,400
hectares of saltmarsh
the largest cluster
of this habitat in the
south and southwest

73,828
wintering waterfowl
each year

 Main Habitats

 Birds

 Fish

MARINE ENERGY

5-14 GW

potential energy
capacity from offshore
renewable technologies
in the Bristol Channel

7 GW


potential capacity
from combination of
tidal range and tidal
stream projects

c. 3+ GW


potential offshore wind
capacity

1.2 GW

planned capacity
from Atlantic Array
windfarm

Proposed
Tidal Range 

Proposed
Tidal Stream 

Proposed
Offshore Wind 

Thank you



A clear solution for farmers
ENGLAND CATCHMENT SENSITIVE FARMING DELIVERY INITIATIVE



Llywodraeth Cymru
Welsh Government



www.severnriverstrust.com