

Severn Estuary Partnership

Working in partnership for the future of the Severn Estuary



Severn Estuary Partnership

Lucy Taylor
Severn Estuary Partnership Officer

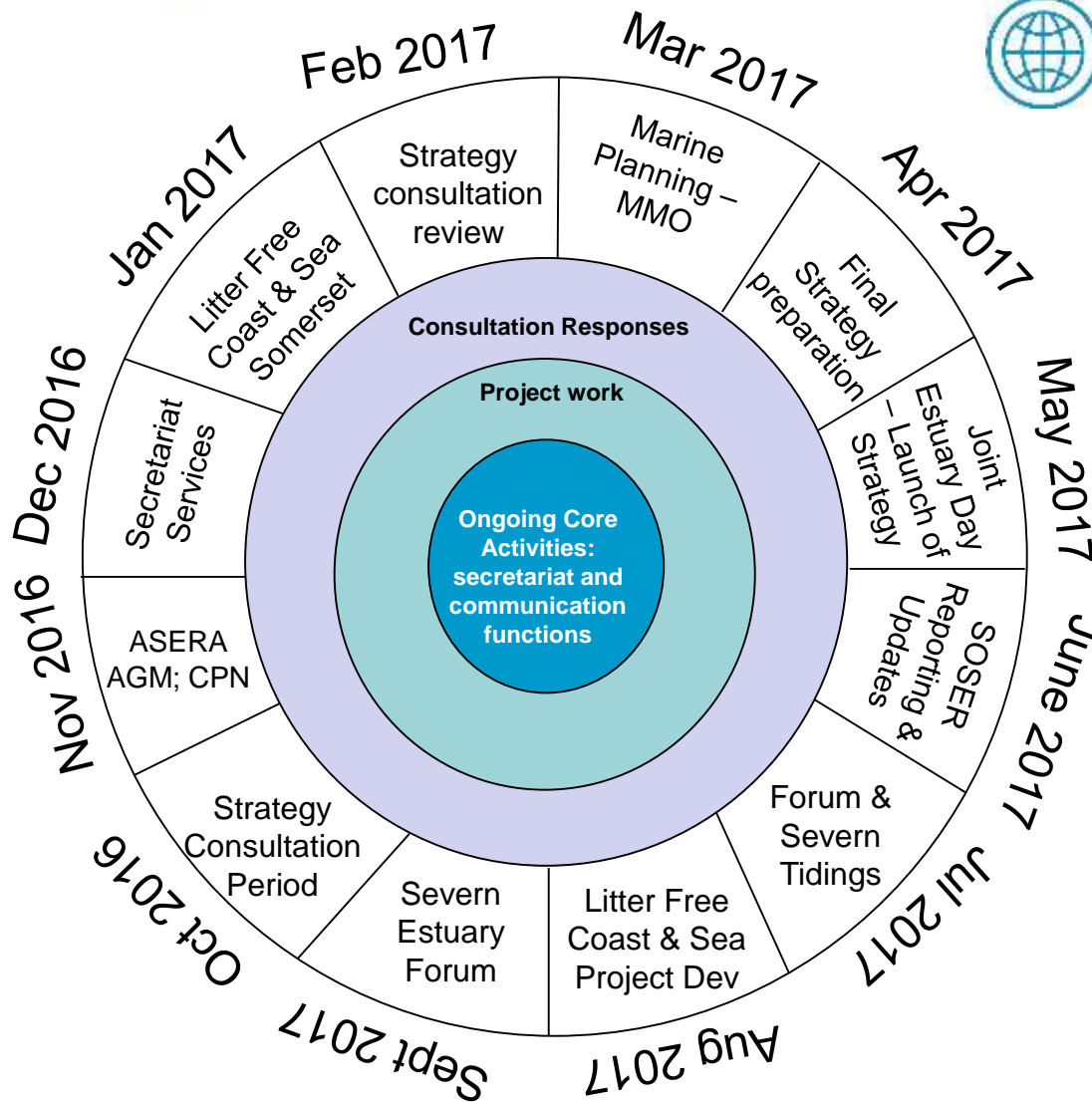
2017 Severn Estuary Forum

www.severnestuarypartnership.org.uk
severn@cardiff.ac.uk



#SEForum2017 @SevernEstuary

SEP Activities



SevernEstuaryPartnership.org.uk



[SevernEstuaryPartnership](https://www.facebook.com/SevernEstuaryPartnership)



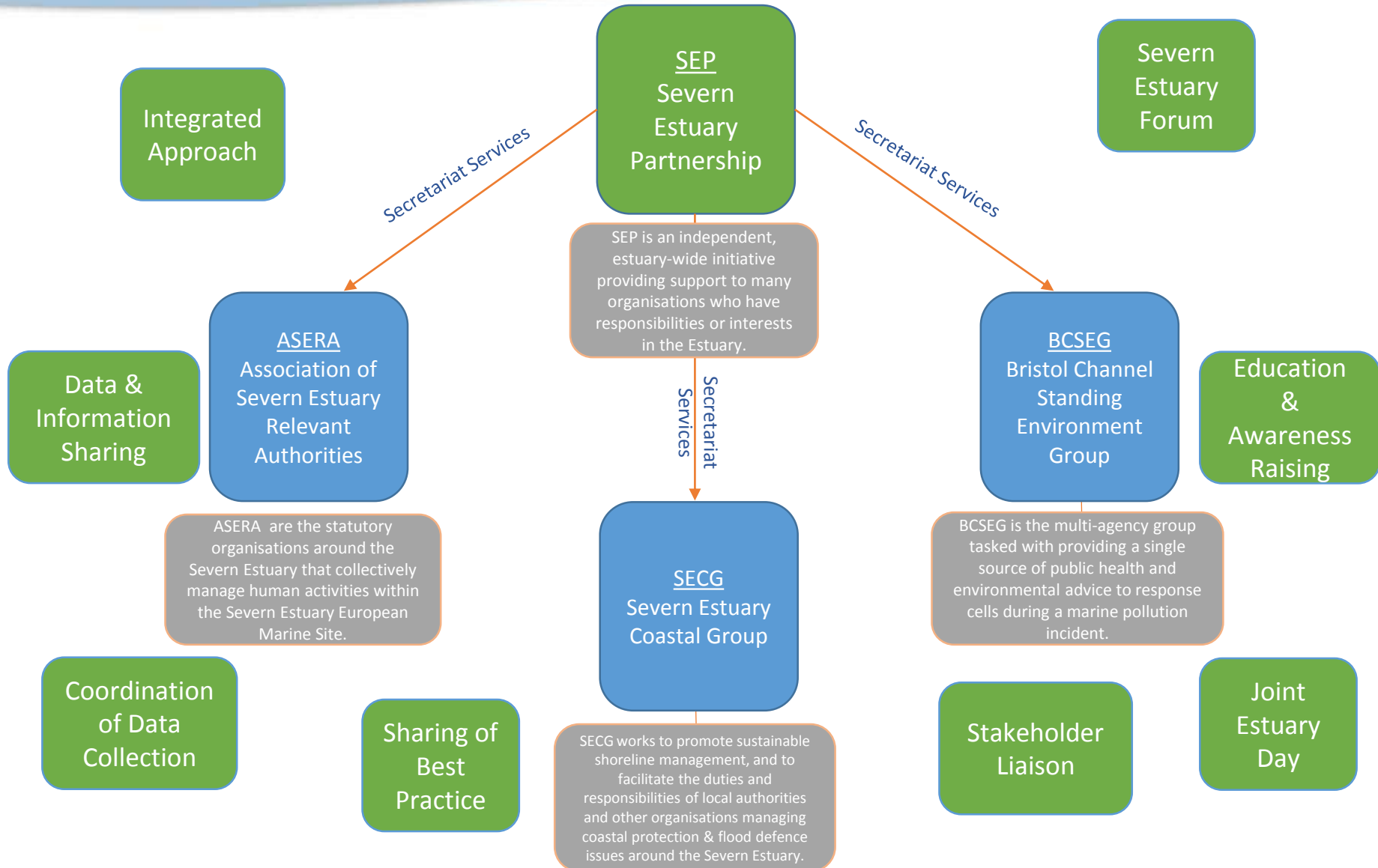
Severn@cardiff.ac.uk



[@SevernEstuary](https://twitter.com/SevernEstuary)



Estuary Group Support



ASERA

Good Practice Guidelines

Walking, Dog Walking & Cycling

- Observe local custom and regulations in the area.
- Respect the protected right of way to landowners in health or amenity areas and keep off sensitive habitats, such as wetlands and riparian areas.
- Follow the National Cycle Code of Conduct.
- Signs are provided to help you understand the Severn Estuary coastline during the summer months. Look for the blue signs for further information.
- Respect the right of way for all.
- Close all after you stop to observe the site and do not to leave 'bag & go' signs.
- See all of your dog's home and return to the dog's responsibility.

Bird Watching

- Protect feeding, nesting and roosting birds by limiting disturbance.
- Keep out of range of birds of prey. If you see a bird of prey approach, stand still and do not move.
- Respect the habitats of birds.

Field Study, Data Collection & Educational Fieldtrips

- Protect wildlife and marine habitats by limiting disturbance.

Horse Riding

- Protect wildlife and marine habitats by limiting disturbance.
- Follow the good practice for horse riding, including feeding, watering, and tending.

Recreational Boating

- Protect feeding, nesting and roosting birds by limiting disturbance.
- Follow the National Cycle Code of Conduct.
- Signs are provided to help you understand the Severn Estuary coastline during the summer months. Look for the blue signs for further information.
- Respect the right of way for all.
- Close all after you stop to observe the site and do not to leave 'bag & go' signs.
- See all of your dog's home and return to the dog's responsibility.

Wildfowling

- Protect feeding, nesting and roosting birds by limiting disturbance.
- Follow the National Cycle Code of Conduct.
- Signs are provided to help you understand the Severn Estuary coastline during the summer months. Look for the blue signs for further information.
- Respect the right of way for all.
- Close all after you stop to observe the site and do not to leave 'bag & go' signs.
- See all of your dog's home and return to the dog's responsibility.

Recreational Angling

- Respect wildlife and marine habitats by limiting disturbance.

Bait Digging

- Respect wildlife and marine habitats by limiting disturbance.

Drones

- Respect wildlife and marine habitats by limiting disturbance.

Airborne Recreation

- Respect wildlife and marine habitats by limiting disturbance.

Safety on the Estuary

- Plan Ahead and Be Prepared!
- Check your trip plans and weather forecast before you start the trip.
- Check your trip plans and weather forecast before you start the trip.
- Check your trip plans and weather forecast before you start the trip.

Invasive Non-Native Species (INNS)

- Respect wildlife and marine habitats by limiting disturbance.

Good Practice Guidelines

Severn Estuary
European Marine Site

Your way to support our estuary

Canllawia Arfer Da

Safle Morol Ewropeaidd
Aber Afon Hafren

Eich ffordd chi o gofngof eite haber

- Raise Awareness
- Reduce Environmental Risk
- Encourage Sustainable Use
- Improve Understanding



A community led campaign to protect bathing water quality and reduce marine and beach litter along the Somerset coast.

Background

- The Litter Free Coast & Sea campaign started in Dorset in 2011 by the Dorset Coast Forum
- Rolled out to Somerset following its success in Dorset
- A partnership approach, coordinated by SEP
- Started in Somerset in January 2016
- Currently Litter Free Coast & Sea Somerset is working in Burnham on Sea
- Funded by:



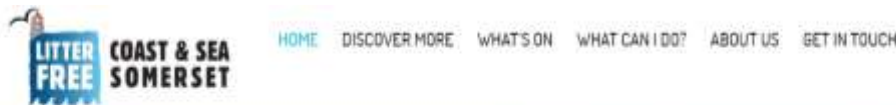
Examples of community engagement in practice.....

Friends of Burnham Beach

Dog Fouling Burnham Pooper Troopers



Communication Outlets



Events



Examples of community engagement in practice.....

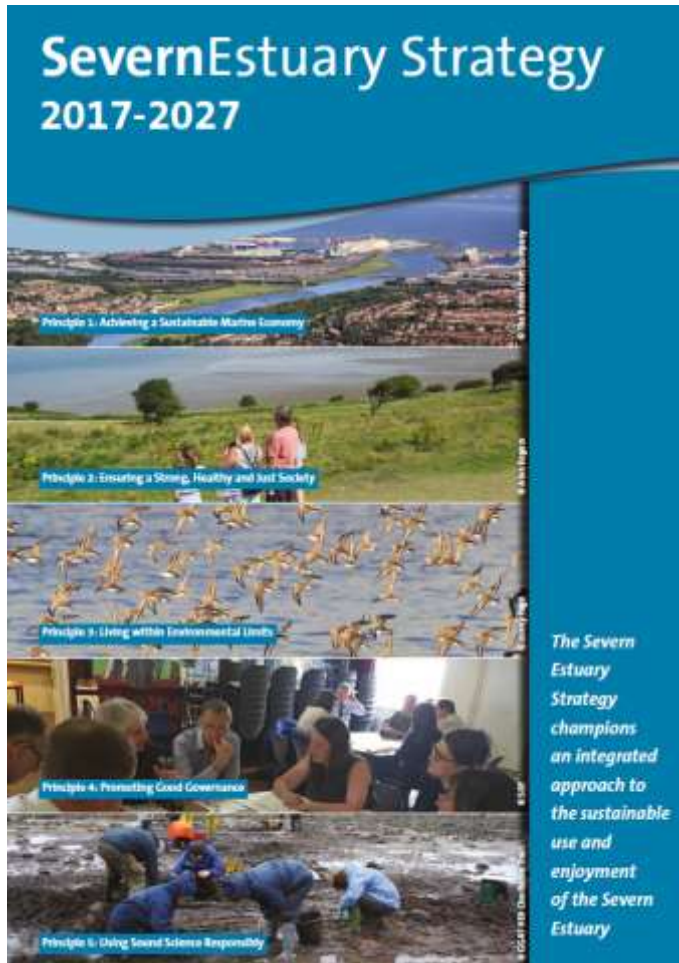
'Don't Feed the Locals' campaign



Future Direction..

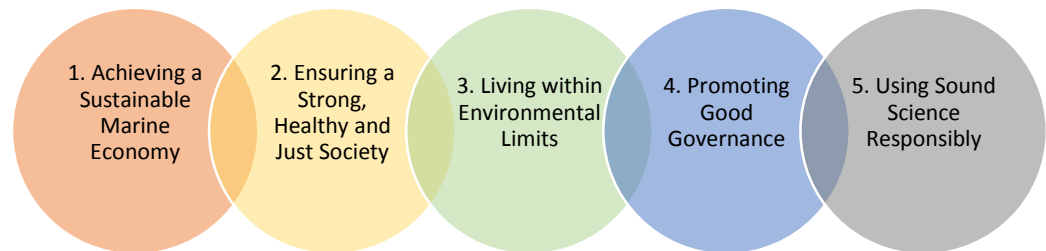


2017-2027 Severn Estuary Strategy



OUR 10 –YEAR VISION FOR THE ESTUARY

The Severn Estuary Strategy champions an integrated approach to the sustainable use and enjoyment of the Severn Estuary



Engagement Timeline



Flavour of Responses



- Strategy update both **timely** and **appropriate**
- provides a **strong framework for ecosystem-based, integrated management of the estuary**
- **promoting integration** across the two **marine plan areas** welcomed as a helpful and focussed mechanism to support engagement and collaboration.
- support of using the five High-Level Marine Objective (**HLMO**) **approach** were received, suggesting the Strategy will provide support for people alongside their **statutory obligations under the Marine Policy Statement (MPS)**

Monitoring



Principle 4 – Promoting Good Governance

Monitoring Table

Action Ref	Indicator	Information source	Supporting partners	Success criteria	Timescale	2011-2016 Action Plan Reference
Action 4.1.1 Encourage public bodies responsible for estuary planning to work together on common issues and evidence in a coordinated and consistent manner.	Number of public bodies engaged in the Joint Estuary Day	SEP	Relevant public bodies	Regular engagement of public bodies, meeting under SEP Joint Estuary Day	Annually	7/4; 7/6; 9/1
Action 4.1.2 Actively support relevant professional national networks to help shape the messages at a national level and ensure best practice is shared with estuary decision-makers.	Staff representation on relevant networks e.g. CPN	Regular review of national networks	CPN	SEP staff to be represented on the CPN Committee	Ongoing	5/3; 5/4
Action 4.1.3 Engage with initiatives and project which have the potential to affect the estuary and its interests.	Number of projects engaged with and level of engagement (e.g. observer status; facilitator; secretariat; communications assistance)	Websites, social media, workshops, conferences, partner organisations, personal contacts	Relevant projects/initiatives	SEP is fully engaged with relevant initiatives and projects and communicates information on these projects regularly to SEP stakeholders	Monthly e-news updates; ongoing	5/7; 8/2; 8/6; 9/1; 9/5; 9/9; 10/4
Action 4.2.1 Produce a 'roadmap' to policies, plans and strategies	Numbers of visits/downloads on website from external stakeholders	Web search, Strategy Workshop results (September 2015)	Quality assurance of roadmap from partners	Roadmap is developed, kept up-to-date and	12 months then ongoing	9/1; 9/9

Marine Planning – South West & Wales



- South West Marine Plan – Iteration 1 Workshops
- MMO – Sustainability Appraisal Advisory Group



- Welsh Government – Marine Planning Stakeholder Advisory Group
- Wales Marine Advisory & Action Group

The Year Ahead



Partnership Development

- Strategy – Action delivery & implementation
- SEP Business Plan review (2017)

Engagement

- Developing SEP Communication Tools
- Raising awareness of development proposals
- Marine planning engagement
- Litter Free Coast & Sea action

Project Opportunities

- Project development & funding bids

Thank you!



Thank you / Diolch yn fawr!

Please fill out your Forum
feedback forms and leave
them on the reception desk

The Severn Estuary Forum 2017 is supported and sponsored by:



RTPI
mediation of space - making of place

