

Developing Flagship Catchment-Scale Projects in the Severn Vale

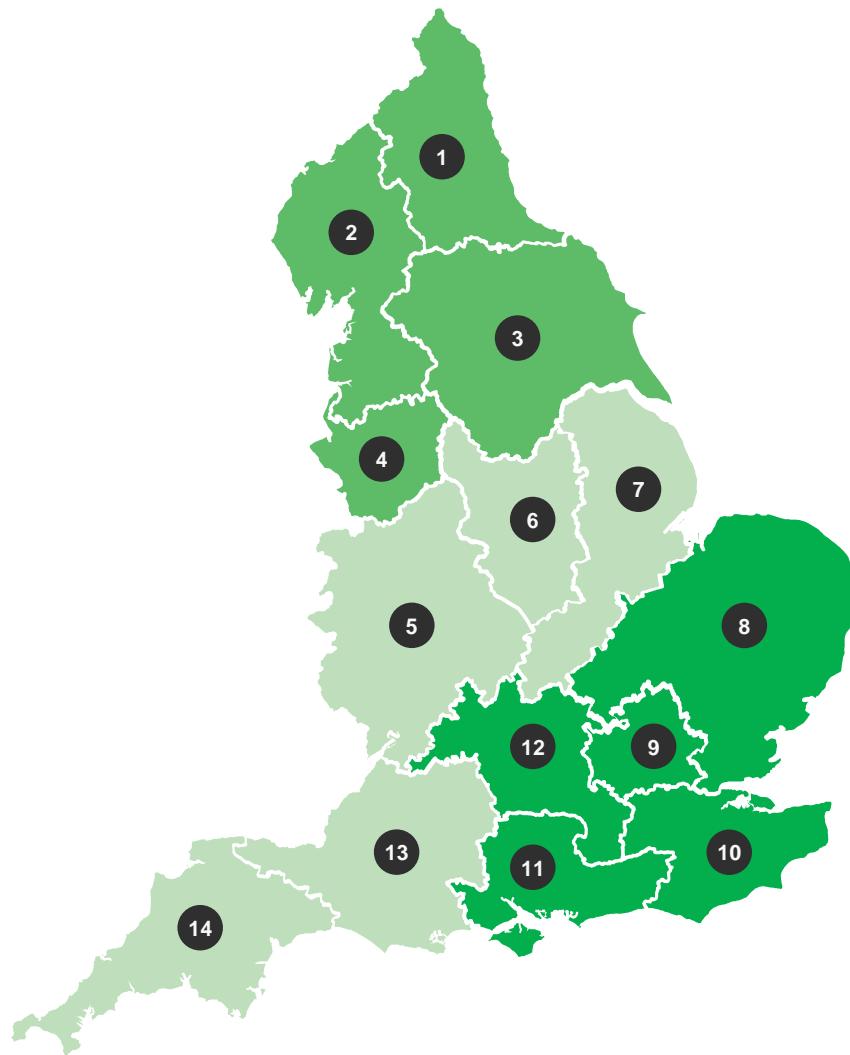
Karen Andrews

Catchment Co-Ordinator, Severn Vale Management Catchment

October 2024

Our areas

- 1 North East
- 2 Cumbria and Lancashire
- 3 Yorkshire
- 4 Greater Manchester Merseyside and Cheshire
- 5 West Midlands
- 6 East Midlands
- 7 Lincolnshire and Northamptonshire
- 8 East Anglia
- 9 Hertfordshire and North London
- 10 Kent, South London and East Sussex
- 11 Solent and South Downs
- 12 Thames
- 13 Wessex
- 14 Devon Cornwall and the Isles of Scilly



Severn Vale Catchment Partnership



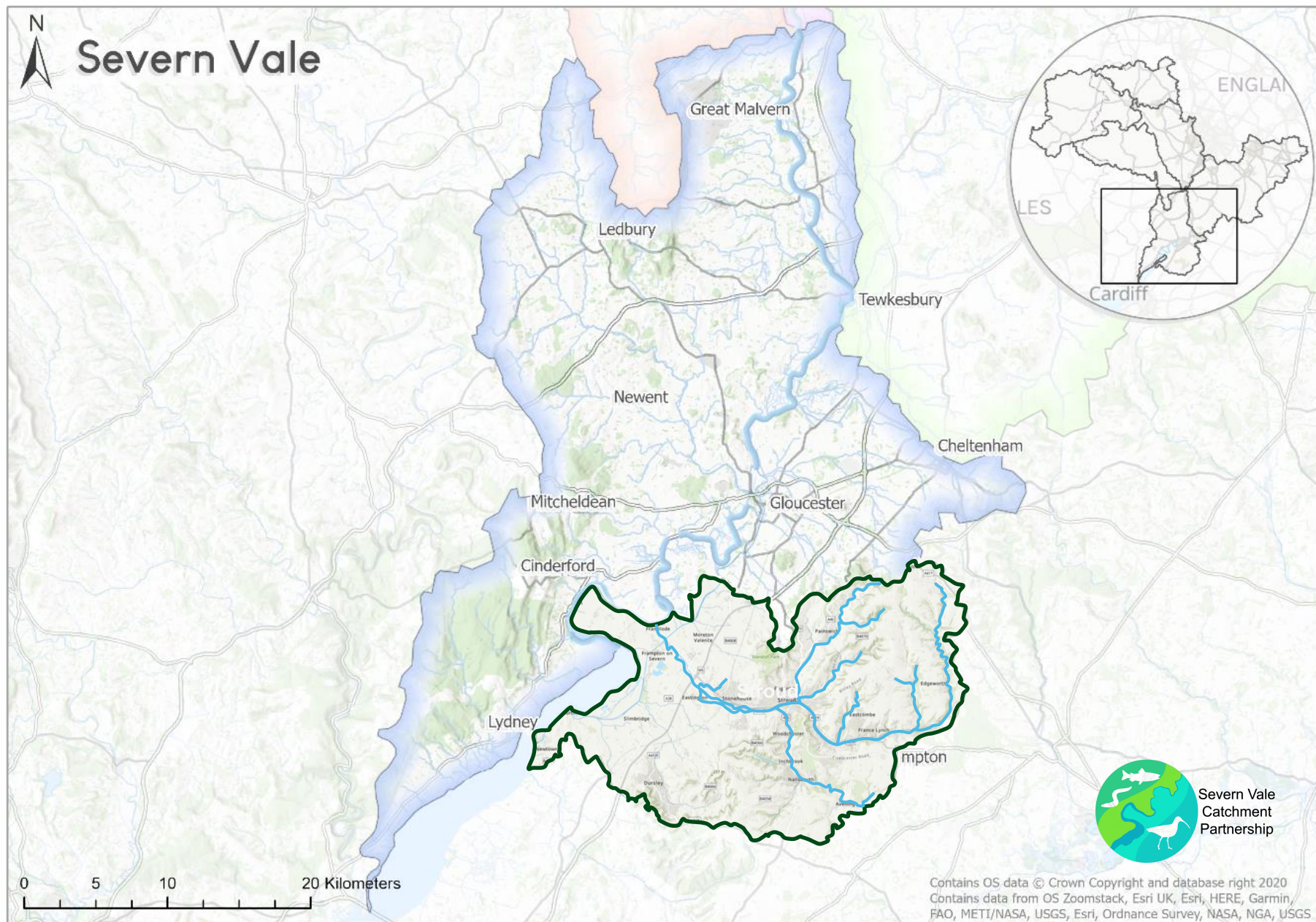
Severn Vale
Catchment
Partnership

Steering Group:

Severn Rivers Trust; Gloucestershire Wildlife Trust; Environment Agency; Natural England; Wildfowl and Wetlands Trust; FWAG; (Forestry England); (Gloucestershire County Council)



Severn Vale



Severn Vale
Catchment
Partnership

Contains OS data © Crown Copyright and database right 2020
Contains data from OS Zoomstack, Esri UK, Esri, HERE, Garmin,
FAO, METI/NASA, USGS, Esri, Ordnance Survey, NASA, NGA, USGS

What is a Flagship Project?

- Overarching umbrella for multiple-project delivery
- To enable a catchment-scale approach to improving the water-related environment
- Provides a narrative for funders and community
- Vision and Strategic **Action Plan – co-created**



What is a Flagship Project 2?

Co-created

Collaborative

Catchment-scale

Why this approach for the Severn Vale?

- Lots of interest but projects were disjointed
- Small scale collaboration meant opportunities were being missed
- Potential for bigger/better bids together
- ‘Selling’ project ideas to funders



How do you identify where your Flagship Projects should be?

SV Catchment Partnership Steering Group (well established) came together to decide where our catchment-scale priorities lay as a group, in synergy with each other. Considered:

- WFD classifications (EA)
- Gloucestershire's Nature Recovery Network (GWT)
- WWT's Blue Recovery Programme
- Local authority and EA flooding priorities



The Vision and Strategic Action Plan (SAP)

**Environmental
Priorities**

**Statement of
Ambition**

Objectives by 2030

Identifying Environmental Priorities

Wilder Frome – 8 environmental priorities:

- Removing barriers to fish movement
- Making space for wildlife
- Working in the wider landscape
- Cleaning up our rivers
- Restoring healthy flows
- Taking action on Invasive Non-Native Species
- Monitoring and data
- Community engagement and partnership

Statement of Ambition

Example from Wilder Frome:

Statement of Ambition

We will make the river channel passable up and downstream for fish and other aquatic species, including implementing multi-species fish passes at all high priority barriers throughout the Frome catchment. In-stream habitat restoration will complement improved connectivity, ensuring species have access to the variety of habitats necessary to complete the different stages of their life cycles.



Objectives by 2030

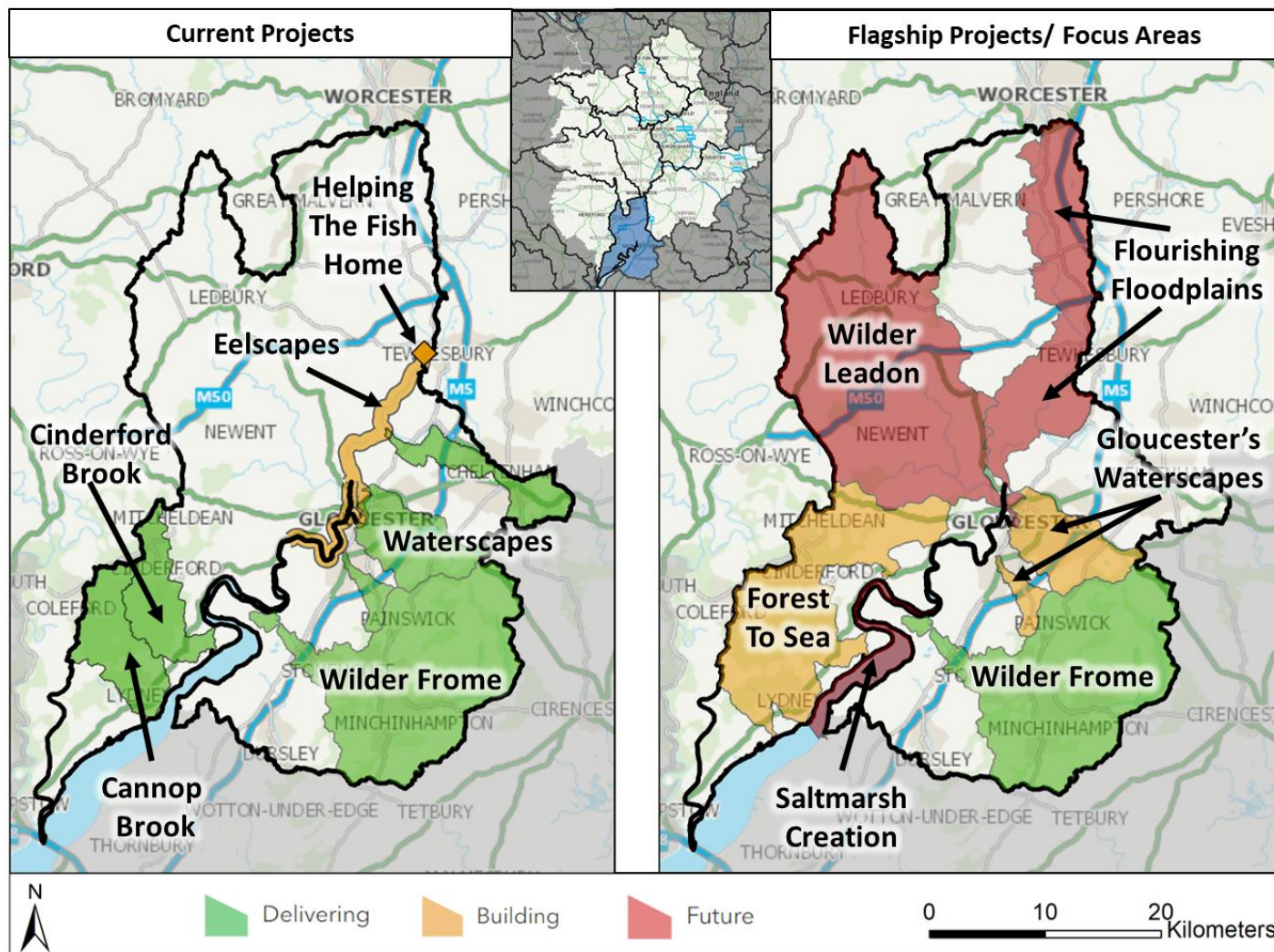
Example from Wilder Frome:

2030 Objectives

- Implement fish passage solutions at the Frome tidal flap, Whitminster Weir, Fromebridge Mill Weir, Ryeford Mill, and Ebley Mill Weir
- Scope further fish passage or barrier removal opportunities, working upstream towards Chalford, including the Nailsworth stream weir at Sainsburys (Kimmins Mill)
- Seek funding for at least 5 additional barrier removals or easements across the catchment
- Seek funding for suitable instream habitat works to support barrier removals or easements
- Retain and expand existing, white-clawed crayfish habitats and populations



Moving towards Flagship Projects in the Severn Vale



How have we developed the approach so far?

The Wilder Frome example



Image Copyright
- Stu McLellan

The Wilder Frome

A Vision and Strategic Action Plan for the
River Frome, Stroud, Gloucestershire

[Wilder-Frome-Strategic-Action-Plan.pdf](#)
(catchmentbasedapproach.org)

Once the plan was drafted.....

- Consultation period
- Final document
- Promoting the plan – local authority/councillors; wider partnership; outside of SV
- Involving the local community – launch event June 2023



Project launch – June 2023

Riverwoods and The Wilder Frome

📍 Stroud Brewery Kingfisher Business Park Stroud GL5 2BY

📅 Start Date
08/06/2023

🕒 Start Time
6:30 PM

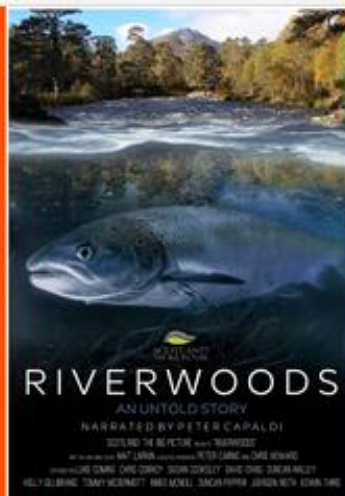
📅 End Date
08/06/2023

🕒 End Time
9:00 PM



STROUD BREWERY

HOSTS:



**Severn Vale
Catchment
Partnership**

Developing an Identity



Developing a structure

- Steering Group :
 - meets 8 weekly, alternately face-to-face
 - expanding
- SharePoint site for the Steering Group to share resources, record meetings etc.
- Outcomes and outputs reporting – progress regularly reviewed and captured on spreadsheet
- Working groups:
 - Fish passage

How is it working?

- Work in progress
- Always developing
- More organisations coming onto steering group as the initiative embeds
- Starting to look at how pieces of the SAP can be delivered through other funding



When is it the right time to develop a Flagship Project?

- When relationships are already established in the geography
- When partners are already actively delivering projects
- When the catchment partnership has a level of maturity to be willing and able to invest time and effort into the approach

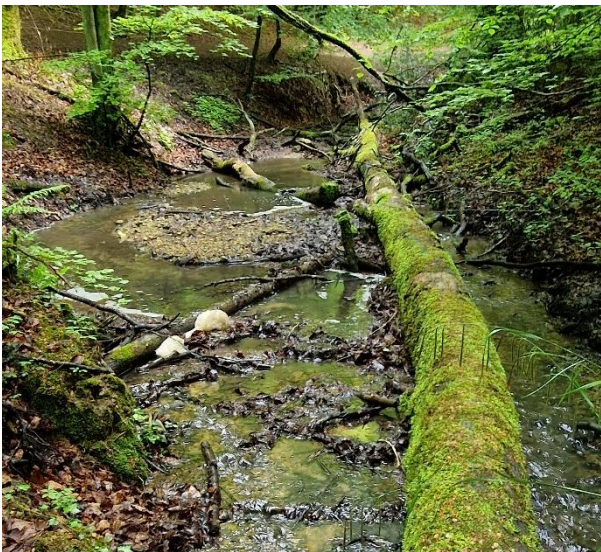


LOOK FOR THE TIPPING POINT

What's next for the Severn Vale?

- Development of Forest to Sea 2025-26
- Development of Gloucester's Waterscapes 2026-27
- Building relationships for Wilder Leadon
- Looking at bigger, stronger, better bids for Wilder Frome



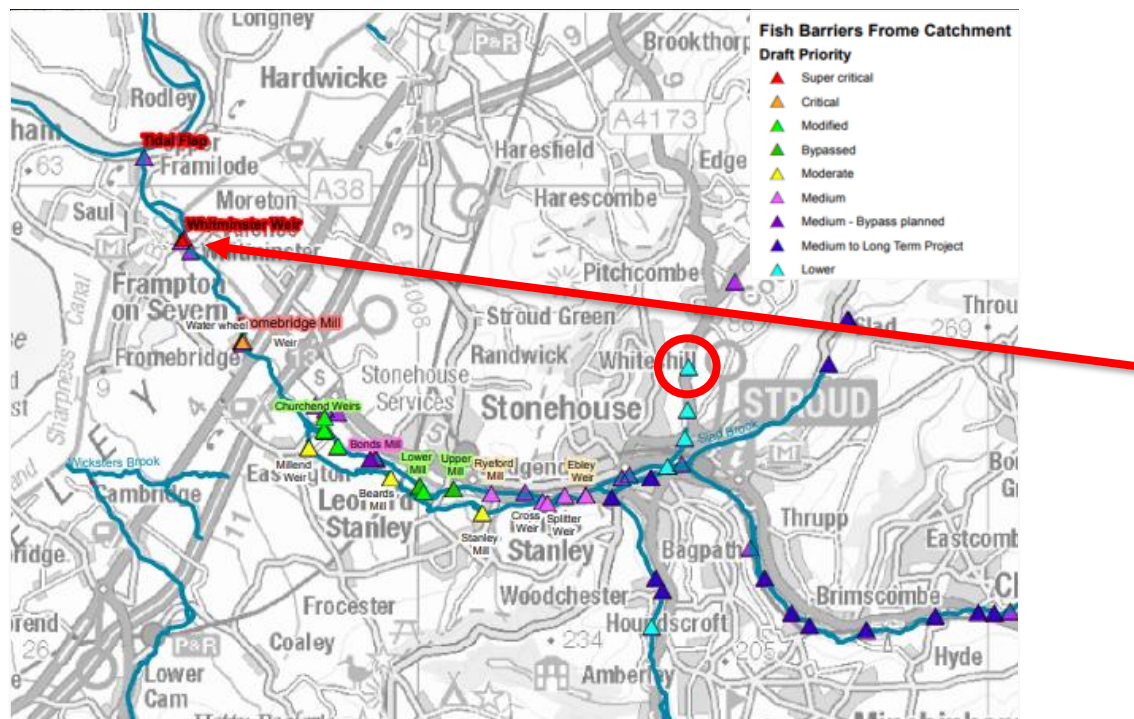


Creating a Wilder Frome

1. Making it easier for fish to migrate and move through the Frome catchment

2030 Objectives

- Implement fish passage solutions at the Frome tidal flap, Whitminster Weir, Fromebridge Mill Weir, Ryeford Mill, and Ebley Mill Weir
- Scope further fish passage or barrier removal opportunities, working upstream towards Chalford, including the Nailsworth stream weir at Sainsburys (Kimmins Mill)
- Seek funding for at least 5 additional barrier removals or easements across the catchment
- Seek funding for suitable instream habitat works to support barrier removals or easements





SEP Update

2024

Alys Morris
Severn Estuary Partnership
Manager







Ymwybodol
o Adar
Hafren



Bird Aware
Severn



Bird Aware
Severn



location

Update of

Environmental quality

Ecology

Human environment

Use of the Severn Estuary

Updates in 2013, 2016



2024/2025

Literature review and update

Identify current and emerging issues

Prioritise data gaps

Data and evidence collection programme

Annual stakeholder days



Chrissie Ingle: Inglec@cardiff.ac.uk



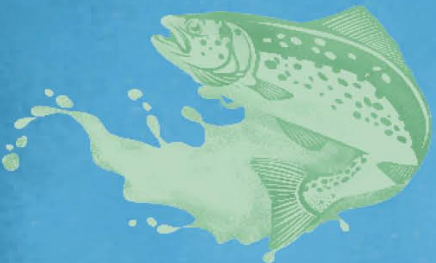




UK's Largest
coastal plain estuary



Largest
tidal range in Europe



Over 110
fish species



100,000 Birds
winter feeding ground



Nature Protected
in designated areas



Blue Carbon



Iconic
surrounding landscapes



Severn Estuary Coastal Group

Working to promote sustainable shoreline management around the Severn Estuary.

Environment Agency **Shoreline Management Plans** [Home](#) [Search](#) [Help](#)

[Home](#) > [Anchor Head to Lavernock Point](#)

Shoreline Management Plan Anchor Head to Lavernock Point SMP19

Coastal Group: [Severn Estuary](#)

The Anchor Head to Lavernock Point Shoreline Management Plan is split into 12 areas. Their boundaries have been set based on analysis of coastal processes and the character of the shoreline. Select an area to find out more information about it.

- [Penarth to Chepstow – Sedbury \(Welsh SMP units\) 1](#)
- [Chepstow and the River Wye 2](#)
- [Tidenham and surrounding villages 3](#)
- [Lydney 4](#)
- [Lydney to Gloucester 5](#)
- [Gloucester to Haw Bridge 6](#)
- [Gloucester to Sharpness 7](#)
- [Sharpness to Severn Crossings 8](#)
- [Wotton-under-Edge 9](#)
- [Lower Soudwell 10](#)
- [Weston-super-Mare 11](#)
- [Barrow 12](#)



Oct 2022

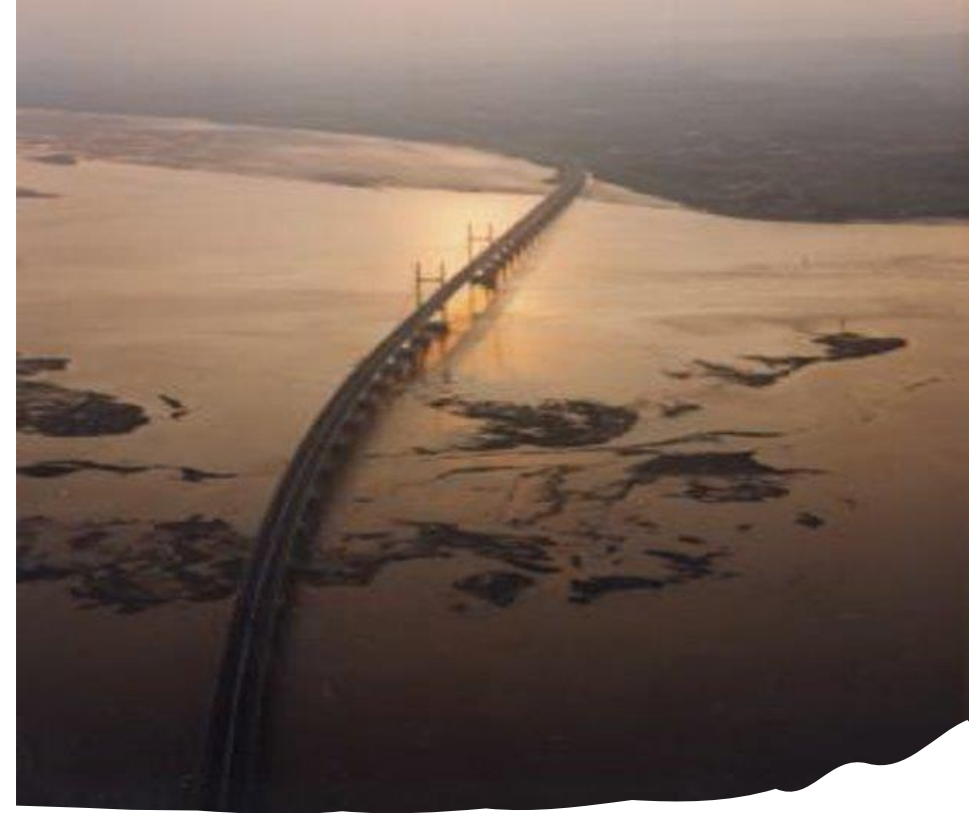
370

Dec 2023

89

Oct 2024

79



Association of Severn Estuary Relevant Authorities (ASERA)

